



LPT LAND PRESERVATION TRUST

STAKEHOLDER REPORT

*Celebrating nearly 40 years of preserving the working farms, historic landscapes
and equestrian heritage of Northern Baltimore County*





More than a dozen of the working farms preserved by LPT have been farmed by the same family for over **100 years.**

In two years we have protected 14 farms, covering **1000 acres.**



The NEW Legacy Chase will be a **must attend** event for many Marylanders.



We **monitor** properties in person and virtually to be sure the terms of the easement are upheld.



LPT with partner Watershed Environmental completed its first **major stream restoration.**



LPT is the sponsor of the most successful Rural Legacy Area in the state, protecting **83 farms.**

The Legacy Chase, LLC was formed in 2022.



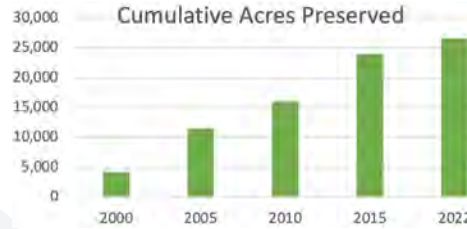
Summer interns assist the Easement Committee with stewardship monitoring.

TWENTY-FIVE YEARS AGO, I was hired by Jack Dillon, then the director of the Valleys Planning Council, to administer the first Piney Run Watershed Rural Legacy grant. In the inaugural year of the Rural Legacy program the Piney Run area had received the largest grant awarded in the state. Jack told me that the interested properties were lined up, and it might be a 6-month job. As my youngest child was starting Kindergarten it seemed a good fit. My kindergartner is now an environmental engineer working in Colorado, and in the last 25 years the Piney Run Area has protected 83 farms, 7,259 acres and been awarded \$44 million in grants. But there is still much work to be done.

The local program is guided by a steering committee initially established by the Valleys Planning Council and the Land Preservation Trust. Many of these individuals have served for the entire 25 years of the program and have been instrumental to the program's success, reaching out to friends and neighbors and encouraging them to learn more about preservation. Members have included **Wayne Armacost, Andrew Barclay, Dan Colhoun, Mark Duvall**, Gail Ensor, **Ned Halle**, and George Kelly (current members in bold).

The Piney Run Watershed area was initially designated as a 19,772-acre block of farmland and forests centered along the Piney Run. The initial application listed 50 property owners representing 4,200 acres who were interested in participating. Thanks to the efforts of the steering committee and the availability of continued state funding over 95% of those initially interested property owners have since permanently preserved their farms.

In recognition of this success the area has expanded twice. In 2002 the area expanded to 32,320 acres and it expanded again in 2011 to the current 43,470 acres. Currently 26,660 acres (61%) of the area is preserved and 3,800 acres (9%) are developed. That means there are still 13,000 acres (30%) of the area that could be developed.



While the Rural Legacy program has been a catalyst and major funder of the preservation in the area, we work with all preservation programs to determine the best possible preservation “fit” for the landowner. The decision to voluntarily preserve your farm is inherently a very personal decision, and no two families have the same goals for the preservation of their farm. It is our job to see if there is a preservation program that will work for that property owner, whether that program is Rural Legacy, the Maryland Agricultural Land Preservation Program (MALPF), a donated easement to the Maryland Environmental Trust (MET) or LPT, or some combination of the available programs.

We need your help to protect the 13,000 acres still unprotected in the Piney Run area. We are most successful when neighbors reach out to neighbors and encourage them to participate. LPT was established for precisely that reason. If you, or your friends or neighbors would like more information please contact me at annjones@thelandpreservationtrust.org or 443-690-8420 (c).



Ann H. Jones
Easement Director, The Land Preservation Trust
Greenway Legacy, LLC
Executive Director, Baltimore County Land Trust Alliance



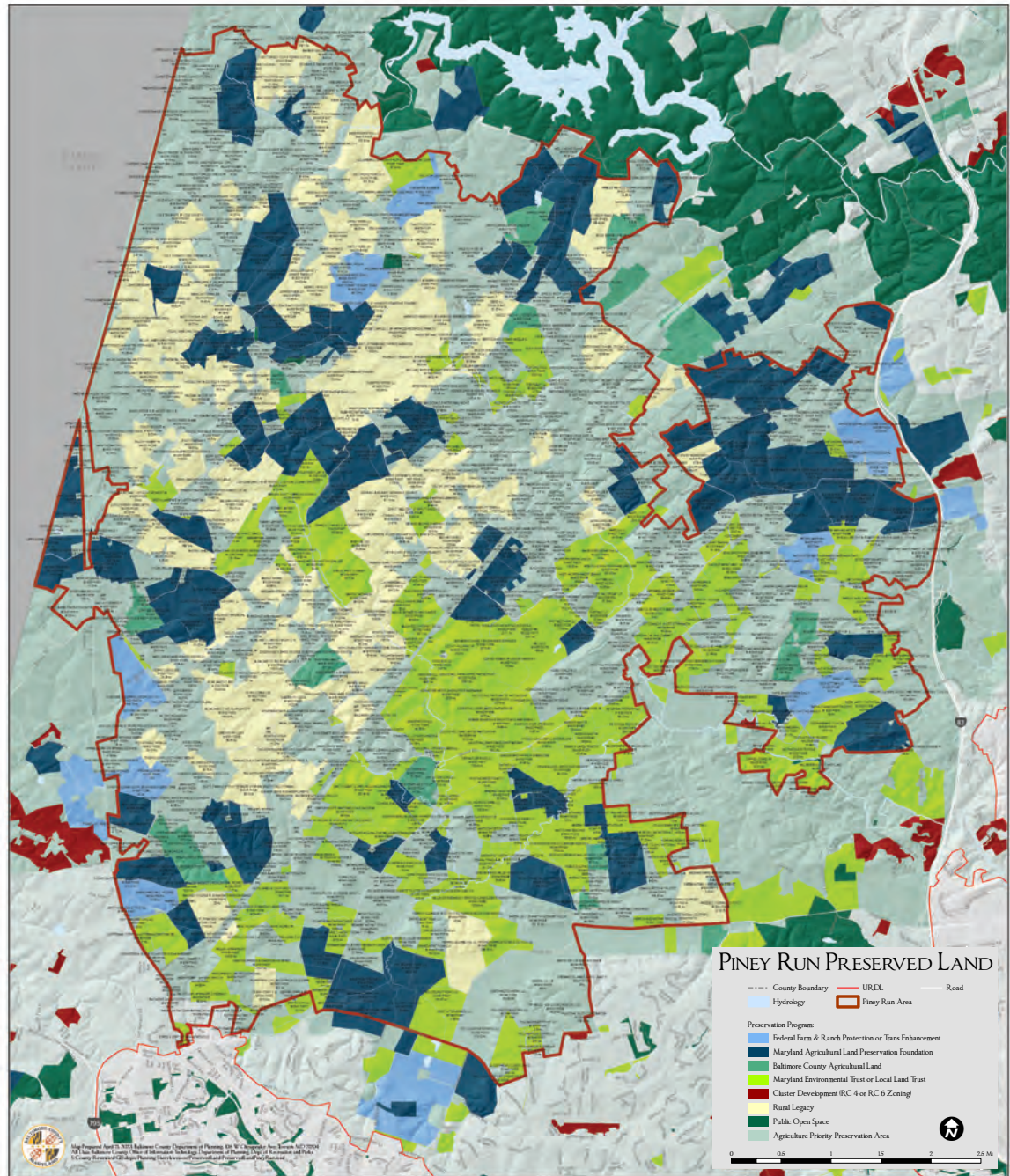
LPT LAND PRESERVATION TRUST

STAKEHOLDER REPORT

- Letter 1
- Preserved Land Map 2
- Stream Restoration Update 3
- New Conservation Easements .. 3
- Legal Defense Reserve 4
- Monitoring Update 5
- Interns 5
- Environmental Education 6
- Shawan Downs Update 7
- Legacy Chase Update 8
- Life Founding Members 9
- Financial Donors 10
- President’s Letter 12
- Financials 12
- Leadership 13

Map of Preserved Properties

There are more than 25,000 acres permanently protected in the area. This legacy helps to ensure that there will be productive farms and forests, clean water and air, and recreational opportunities for future generations.



STREAM RESTORATION

The three pillars of LPT's mission are conservation, stewardship, and education. In service of these goals, in 2019 LPT entered into a memorandum of agreement with Watershed Environmental LLC to collaborate on projects to restore and enhance natural resources and habitats. Watershed Environmental is a consulting firm based in Harford County which specializes in the field of natural resources consulting and ecological restoration with over 50 years of combined staff experience.

In April of 2023, over 13 acres of trees and shrubs were planted on LPT's inaugural natural resources restoration project on a privately owned farm along the Piney Run. This planting culminated over 3 years of planning and construction resulting in 4,800 linear feet of restored stream, 3.7 acres of restored wetlands, and 13.2 acres of restored riparian forest. The project was funded by grants from Baltimore County and the Maryland Department of Natural Resources' Chesapeake and Atlantic Coastal Bays Trust Fund, with Baltimore County as the recipient of nutrient and sediment reduction credits derived from the project. All stakeholders involved in the project have been outspoken regarding its success to date, and we anticipate that the resulting in-stream habitat improvements will promote substantial increases in brown trout and other native fish species populations.

In January 2022, design was initiated on the next restoration effort on the Piney Run, which proposes +/- 2,500 feet of stream restoration and 6 acres restored riparian forest. Pending receipt of construction funding through a DNR grant, this project is anticipated to begin work later in 2023. We hope to begin design on two other projects, one along the Piney Run and one along a tributary to Western Run, in the coming months. Other landowners along the Piney and Western Runs have expressed interest, and we hope to continue to work to restore and improve habitat and water quality within the watershed in the coming years. Landowners interested in participating in this important effort should contact LPT.



Jim Morris
Principal, Watershed
Environmental
LPT Partner



NEW EASEMENTS SINCE 2020

Mr. & Mrs. Donald Wesley King

Mr. & Mrs. Mark Duvall

Mr. & Mrs. Robert McHugh

Mr. & Mrs. Charles C. Fenwick 3rd

Mr. Thomas Whedbee

Falls Road Farms LLC

Mr. & Mrs. Christopher Baratta

Mr. & Mrs. Daniel Baker

Mrs. Caroline Svrjcek

Mr. Thomas Morris

Mr. Fred Schaefer
(Fox Springs Farm LLC)

The Wilkie Family
(Carmel View Farm LLC)

Ms. Penny Miller

Mr. Frank Peltzer

PROTECT: LPT'S LEGAL DEFENSE RESERVES

An ounce of prevention is worth a pound of cure. - Ben Franklin

The core of LPT's mission as a land trust is holding conservation easements, which are perpetual commitments by landowners, shared by LPT, to protect and conserve their land. The most effective way for LPT to play its role in this shared responsibility is by engaging regularly with land owners, providing stewardship, and keeping owners apprised of their easement promise. Outreach is never more important than when a property changes ownership as new owners are not always familiar with easements and conservation.

LPT regularly monitors the properties on which it holds easements with the goal of monitoring every property annually, using a combination of on-site and on-line monitoring. On-Site monitoring allows LPT to see the property in person, to document compliance with the easement and to meet with the landowners on a more personal level. On-Line monitoring takes far less time, but still allows LPT to examine changes to buildings, structures, ownership, or use. The goal is to monitor 20% of the properties on-site each year and to monitor the other 80% on -line. In other words: trust, but verify.

All land trusts' primary role once an easement is established is to protect the terms of the

easement. Through a combination of ongoing dialogue and monitoring LPT hopes to avoid violations by assuring owners are familiar with the terms of their easements and are willing to engage with LPT in anticipation of making significant changes to their property. Fortunately, virtually all owners of conserved properties appreciate the many benefits of conservation. LPT has an exemplary history of landowner compliance - thank you.

However, as documented by the Land Trust Alliance (LTA), over time (and since conservation easements are perpetual, easements last a very long time), every land trust will have to take action to defend the terms of some of the easements it holds. If an easement violation is inadvertent, and particularly if the cost of compliance with the terms of the easement is low, the cost to the land trust of defending the easement is also low. An inadvertent or small violation usually can be remedied. However, when a violation is purposeful or if difficult to remedy, the landowner may not agree voluntarily to 'undo' their transgression, and the land trust needs to be prepared to take legal action to assure compliance. On average, LTA estimates legal action may cost a land trust \$35,000 to \$100,000 - no doubt something to be avoided.

LPT holds conservation easements on over 360 properties and has the following risk factors associated with higher-than-average easement defense costs: According to the LTA,

- Many of LPT's original easements were smaller suburban properties.
- Many properties are owned by successors to the original grantor.

- Land trusts holding easements for over ten years have double the frequency of violations than newer land trusts.

LTA developed a Legal Reserve Calculator tool which suggests the level of reserves needed by a land trust based on the characteristics and age of the conservation easements it holds. For LPT, the LTA calculator indicated that LPT's target legal defense reserve for its non-Rural Legacy properties would be \$440,000. LPT currently has \$156,000 allocated to its non-Rural Legacy legal defense reserve and anticipates building this fund annually. In addition, LPT has reserved conservation funds to cover the cost of monitoring the easements it holds. Held separately are restricted reserves, dedicated by the State, to monitor and protect the Piney Run Rural Legacy properties.

Finally, LPT is working to be in a position to purchase easement defense insurance from a non-profit mutual insurer established by LTA, called TerraFirma: established to allow the cost of easement defense to be spread across the national land trust community. LPT expects to be in a position to purchase easement defense insurance within the next four years. Preserve AND Protect.



Michael Sonnenfeld
Easement Committee
Chair

Monitoring Update

Co-Holder	2019		2020		2021		2022		Total LPT #	Total Sum of Acres
	LPT #	Sum of Acres	LPT #	Sum of Acres	LPT #	Sum of Acres	LPT #	Sum of Acres		
MET	2	220	7	279	22	1,288	20	760	51	2,548
DNR	1	30	15	1,053	17	982	13	792	46	2,857
MALPF			2	263	17	1,888	1	166	20	2,316
BAL CO					1	216	5	456	6	672
TPL					1	41			1	41
No Co-Holder	13	205	15	603	125	1,092	36	765	189	2,666
Grand Total	16	455	39	2,198	183	5,508	75	2,938	313	11,099



SUMMER 2023 OPPORTUNITY CONSERVATION EASEMENT MONITORING INTERNSHIP

Since 2021, LPT has hired a college student to be a paid student intern during the summer to monitor conservation easements and to build LPT’s conservation property data base. The interns typically examine high resolution satellite imagery (available online) to confirm landowners’ compliance with the terms of the conservation easement, and do a limited number of site visits to confirm details that cannot be seen from a satellite image and to validate the effectiveness of using satellite imagery

for monitoring conservation properties. In addition, the interns enter data into LPT’s conservation property data base, which will significantly streamline LPT’s future monitoring of its conserved properties. LPT’s conservation property data base has over 200 data points per property, detailing the ownership, usage of the property, property parcels, structures on the property, natural resources and habitat and specific terms of the conservation easements. The interns also load images of the properties and documents related to the conservation easements into LPT’s online, “cloud,” file storage system.



Morgan Buchanan was one of our valued interns who helped continue our mission while gaining valuable experience.

The interns are trained broadly about how conservation easements function to preserve open space, agricultural use of rural land, natural resource management and land preservation, and gain valuable experience:

- accessing recorded conservation deeds of easement and ownership information online
- reviewing conservation deeds of easement for key use restrictions and covenants
- entering data in LPT’s easement data base (in Excel)
- storing data and documents in LPT’s cloud storage (on Amazon Web Services)

Additionally, the intern may have the opportunity to spend time in the field shadowing LPT’s Easement Director on her field visits to larger, primarily agricultural, properties.

The intern gains valuable conservation and natural resource experience and is paid for their work.

ENVIRONMENTAL EDUCATION

There is excitement around the fact that the Piney Run at King's Eye Environmental Center (Center) is now open and planning to bring professional development, planning sessions, and classroom learning to life this spring. The Center will support environmental educators, professionals, and urban students by showcasing the natural resources, stream restoration, environmental education, stewardship, and our commitment to protecting the Piney Run watershed.

The principal, teachers, and curriculum development experts from the Lilly May Carroll Jackson (LMCJ) Charter School, a junior high school all-girls school, visited the Center as they create programs to inspire future generations to protect the environment through sustainable practices and transform their neighborhoods into cleaner and greener places to live. The MDOT Maryland Port Administration and the Masonville Cove Urban Wildlife Refuge Partnership, a model for environmental restoration and community engagement in South Baltimore, is working with the LMCJ 5th graders for outdoor exploration, games and story-telling at the school and the Center.

Through this program, the students will be engaged in water quality and watershed training to make the connection between their lives and neighborhood schools', including the building of rain/pollinator gardens and the management of the school's green areas. The Masonville Cove WildSTEM interns participated in a workshop

at the Center during the summer. MPA will bring another Masonville Cove Internship cohort in the coming months for hands-on environmental education.

The Center now provides the Maryland Association of Environmental and Outdoor Educators (MAEOE) with an excellent place for professional development and meetings. MAEOE is planning a board meeting, workshops, and training for teachers to assist in professional development and certification and help schools, agencies, non-profits, and businesses guide environmental education while achieving the performance standards adopted by the state of Maryland.

Facilitated by Dr. Mamie Parker, the Center hosted thought leaders, government and elected officials, stakeholders, and businesses to engage in productive conversations on future projects, programs, and partnerships related to the Waterfront's Partnership's Healthy Harbor Initiative.



Dr. Mamie A. Parker
Principal, M.A. Parker &
Associates
LPT Partner



SHAWAN DOWNS

The mission of the Shawan Downs Committee is to steward the property and its fixtures, partner with our tenants to maximize the mutual benefits of those relationships, and to manage and organize the various equine and other events which occur on the property.

Regarding stewardship of the property, we acknowledge with great sadness the passing of our friend and partner, Hank Suchting. For many years, Hank hayed the property in conjunction with the federal Grasslands Conservation Reserve Program, he was great to work with, and very facile, regarding accommodating the various equine events. He will be missed. In the same token, we are excited and grateful that our relationship with our neighbor Branchwater Farms will continue with Hank's brother Carl Suchting and Hank's wife, Doreen.

The fencing on the property is decades old. Thanks in large part to a very generous grant from the Theodore Bauer Charitable Foundation, significant fencing replacement is underway. This effort is being spearheaded by Bruce and Charlie Fenwick, and will occur in phases. The first phase will be the racecourse perimeter fencing, followed by the fencing in the field to the left of the driveway as one entrance. We also gratefully acknowledge the donation of fence boards

and posts by Charlie and Bruce. Significant wind storms have knocked down some very large oak trees in the woods on the west side of the property, and with the assistance of Wyatt Bosley, and his portable mill, we are harvesting some of those trees for fence boards.

Several major equestrian events each year are held at Shawan Downs, hosted by various equine related organizations: including the Green Spring Valley Hounds Point-to-Point at the end of March, Maryland Combined Training Association event in May, and the newly reconstituted Legacy Chase the last weekend in September, reported on separately in this report. We are also evaluating and considering other low impact uses of the property, and in the last year this has included several high school and college cross country running practices and two meets.

It is a dream of the LPT to renovate and repurpose the historic main barn and the adjacent milking barns. Toward this end, we continue to investigate and explore grand opportunities from private donors, and the city, state and federal governments.



Mike Wharton
Shawan Downs
Committee Chair



INTRODUCING THE LEGACY CHASE AT SHAWAN DOWNS LLC

Many of you enjoy an afternoon in September at Shawan Downs taking in the view and the horses as they make their way around the beautiful course. For many years, The Legacy Chase was managed by and benefitted GBMC. With the demands placed on the Hospital by Covid, GBMC could no longer continue to sponsor the race and for two years, LPT did its best to offer a venue for horses and spectators alike. Last year, with the help of a New Legacy Chase Committee and with leadership support from several generous neighbors, the Legacy Chase was back! With a very short time line, the Committee organized a beautiful day of racing- a success on many fronts. The day broke even financially, more horses were entered than any other one day meet, and by all accounts everyone enjoyed the day.

Going forward, the Legacy Chase will be managed by the Legacy Chase at Shawan Downs LLC, a single member subsidiary of LPT. Blake Sheehan and James Stierhoff lead the Board of Managers which include young professionals from the area. We are pleased to add that Mark Lund, Director of Operations for The Legacy Chase at Shawan Downs, concentrates his time in developing new sponsors – giving energy to the day and with the goal of the Legacy Chase donating not only to maintenance and improvements at Shawan Downs, but to hopefully being in a position to share excess with a community-based charity.

Thanks goes to those who inspired the move to create the Legacy Chase LLC, to Mike Wharton with his well-organized approach to building the committee and working with attorneys to complete the LLC process – and in particular to Blake Sheehan and James Stierhoff and the rest of the LLC board of managers for their leadership.



James Stierhoff



Blake Sheehan



SUPPORTERS OF SHAWAN DOWNS

ORIGINAL DONORS

Frank A. Bonsal, Jr.
 André W. Brewster*
 Norma P. Killebrew
 Jack S. Griswold
 Mary W. Watriss*
 Susan G. McDonald*
 J.H. Williams, Jr.*
 Charles C. Fenwick*
 Elizabeth W. Fenwick
 Deborah N. Ward
 Glenn R. Martin
 Benjamin H. Griswold IV
 James C. Alban III
 Mr. & Mrs. Sherlock S. Gillet*
 Thomas C. Whedbee
 Mr.* & Mrs. Davison D. White
 James S. Riepe
 Donald B. Hebb, Jr.
 J. Dorsey Brown III
 Charles C. Fenwick, Jr.

PATRONS

Mr. & Mrs. Peter Wight*
 Mr. & Mrs. Irvin S. Naylor
 Jeanne Vance*
 John B. Howard
 Sherry L. Fenwick
 Theodore W. Bauer
 Robert A. Hoffman
 Charles P. Merrick III
 The John K. Shaw, Jr., Family
 Mr. James A. C. Kennedy
 Perry J. Bolton
 Mr. & Mrs. Walter W. Brewster*
 The Family of Janon Fisher Christine
 W. Brown
 E. Walter Bell, Jr.
 Gail P. Reipe
 H. Bruce Fenwick
 Mr & Mrs George Palmer*
 George S. Rich
 Mr. & Mrs. Benjamin F. Lucas II
 Mrs. William D. Class, Jr. & Family
 Frances C. Smith
 Mr.* & Mrs. E. Phillips Hathaway
 Thomas A. Graul

Mr. & Mrs. Vittorio Di Vivo
 J. Fife Symington* &
 Natalie Brengle*
 John R. Rockwell *
 Mr. & Mrs. David Testa
 Douglas W. Hamilton, Jr.
 Nancy I. Marburg*
 James R. McDonald
 John L. McShane*
 Dr. Nicholas & Stephanie Meittinis
 Mr. & Mrs. L. Patrick Deering*
 Frances M. Peck
 Mr. & Mrs. Francis N. Iglehart*
 Lucy A. C. Howard
 Ann & Michael Hankin
 John W. Beckley
 Francis X. Knott
 Mr. & Mrs. Charles Newhall
 Mr. & Mrs. Thomas G. Young III
 William* & Dorothy Gerber
 Dr. & Mrs. Patrick Walsh
 Richard W. Palmer
 Mr. & Mrs. Jerald E. Brown
 Mr. & Mrs. Erwin L. Greenberg
 Dr. & Mrs. Kirby L. C. von Kessler
 Mr. & Mrs. Donald R. Heacock
 Dr. & Mrs. Peter Horneffer
 Jack & Sheila Fisher
 Mr. & Mrs George P. Mahoney, Jr.
 Mr.* & Mrs. Daniel B. Brewster
 Mr.* & Mrs. Robert Bricken
 Mr. & Mrs. Hugh D. McGuirk
 Lynn & Florence McNeal
 Peyton S. Cochran, Jr.*
 Mr. & Mrs.* I. Manning Parsons
 Thomas F. & Clementine Mullan
 Foundation
 Hobart C. Buppert II
 Mary Greenwood
 Howard Bruce
 Patti & Blake Schindler
 Howard P. Colhoun
 Mr. & Mrs. Edward Berge
 Mr. & Mrs. James J. Ward III
 Green Spring Valley Hounds
 Thomas Schweizer II
 Mr. & Mrs. Howard D. Wolfe, Jr.

Mr. & Mrs. Edward A. Halle, Jr.
 Michael J. McCarthy
 Redmond C. S. Finney*
 Stiles T. Colwill
 H. Turney McKnight
 David B. Wisner
 David Ashton & Meg Page
 Gregory R. Weidman
 Mary Charlotte Parr
 Fancy Hill Foundation
 Gerry L. Brewster
 The Charles T. Bauer Foundation
 Christopher D. Mudd

LIFE FOUNDING MEMBERS OF SHAWAN DOWNS

Robert A. Kinsley*
 Dr. & Mrs. Mark W. Wheeler
 Arthur W. Arundel*
 Wallace W. Lanahan*
 Mr. & Mrs. Scott C. Naylor
 Louis Neilson III*
 Ann Martin
 Mr. & Mrs. Peter R. Fenwick
 Mrs. Frederick B. Peterson
 Henry M. Blue
 Mr. & Mrs. Clark F. MacKenzie
 John William Taylor IV
 Stephen S. Howard
 Mark M. Collins, Jr.
 Ann L. B. Yellott
 Mr. & Mrs. Randle M. Goetze III
 Laurence Oster
 Douglas V. Croker III
 Hugh J. O'Donovan*
 Gregory H. Barnhill*
 Horst K. A. Schirmer
 Mr. & Mrs. Raymond L. Bank
 Stuart S. Janney III
 The Muffie & Courtenay
 Jenkins Family
 Mr.* & Mrs. Warren R. Dempsey
 Mr.* & Mrs. Rufus M. G. Williams
 Mr. & Mrs. Stephen F. Bisbee
 Paul Mark Sandler
 Dr. & Mrs. John R. S. Fisher
 Jeffrey S. Amling

Malcolm Morris
 Martha Frick
 Symington Sanger
 Joan Mch. Hoblitzell*
 Dr. & Mrs.* William Fritz
 Mr. & Mrs. C. Franklin Eck*
 Samuel Slater
 Harold C. Green II
 Mr. & Mrs. Albert J. A. Young
 Charles E. Herget
 Mr. & Mrs. Donald M. Culver *
 Mr. & Mrs. David Hayden
 Mr. & Mrs. Bentley Offutt
 Kingdon Gould*
 Avla R. Pitts
 Mr. & Mrs. Andrew Obrecht
 Mr. & Mrs. Stuart D. Frankel
 Stephen F. Edelen
 Sharon & Andrew Whelton
 Mr. & Mrs.* Reid FauntLeRoy
 Mr. & Mrs. Christopher Goelet
 Mr. & Mrs. John T. Chay
 Bonnie* & Stewart Hecht Rosenberg
 Marshall & Melissa Elkins
 Mr. & Mrs. Richard T. Shortess, Jr.
 F. Mackey Hughes
 Mr. & Mrs. Philip Goelet
 Mr. & Mrs. Alexander G.
 Campbell III
 Ellie & Steve Weinstein
 Drs. Gordon & Barbara Shelton
 Mr. & Mrs. Timothy F. Roberts
 Larry E. Knight
 Andrea & Larry Knight
 Jeanne H. Baetjer*
 Dr. & Mrs. Aristides C. Alevizatos
 Betty Shaw Weymouth
 Mr. & Mrs. Steven L. Berman
 Emily & Chris Baratta
 Maryland Combined Training
 Association
 Danielle Brewster
 David T. Warfield
 Procter & Gamble Cosmetics
 Foundation, Inc.
 Mr. & Mrs. Daniel R. Baker
 Maj. Gen. & Mrs. Bruce F. Tuxill

Green Spring Hounds Pony Club
 Alexandra Long
 Ann D. Stewart
 Jennifer R. Small
 Christy & David DiPietro
 Michael J. Sonnenfeld
 & Betty W. Symington
 Mr. & Mrs. Stuart Amos
 The Hon. T. Bryan McIntire*
 Mr.* & Mrs. Rene J. Gunning, Jr.
 Mr. & Mrs. Benjamin S. Schapiro
 Michael Weinman*
 Mr. & Mrs. William A. Kroh* Nancy*
 & Victor Frenkil, Jr.
 Mr. & Mrs.* Douglas Nyce
 Charles E. Vieth
 W.A. Read Knox
 Samuel Dell
 Aris Melissaratos
 Jennifer & Edward Winslow
 Julia Jitkoff & Stanislaw
 Maliszewski
 Charles E. Noell
 Mr. & Mrs. Ross P. Flax
 Achsah O'Donovan
 Mr. & Mrs. Steven Munger
 Mr. & Mrs. Malcolm Berman
 Mr. & Mrs. Peter Austin
 Michael T. Wharton
 Ethel & Donald Howard
 Mr. Raleigh Brent III

HONORARY LIFE FOUNDING MEMBERS

L.H. DeGarmo*
 G. Leslie Grimes*
 Carl E. Shaffer*
 Earl V. Wilhelm*
 Andrew Barclay
 Kevin A. Howard
 William O'Brien Finch*
 William L. Seal, Jr.
 Jack Gold

* Denotes Deceased

2020, 2021, AND 2022 FINANCIAL DONORS:

Annual giving is an essential component to our success.

Ms. Elsie Armacost
Mr. & Mrs. Peter S. Austin
Mr. & Mrs. Daniel R. Baker
Mr. & Mrs. Raymond L. Bank
Mr. Justin Batoff
Mr. & Mrs. John W. Beckley
Ms. Meg Blakey
Dr. Rachel Blakey
Mr. & Mrs. Jason A. Blavatt
Mr. & Mrs. Henry M. Blue
Mr. & Mrs. Perry J. Bolton
Mr. Robert Bonnie &
Ms. Julie Gomena
Mr. & Mrs. Frank A. Bonsal, Jr.
Lisa & Bruce Boswell
Mr. Denis Bourke
Ms. Michelle Boyle
Mr. Raleigh Brent III

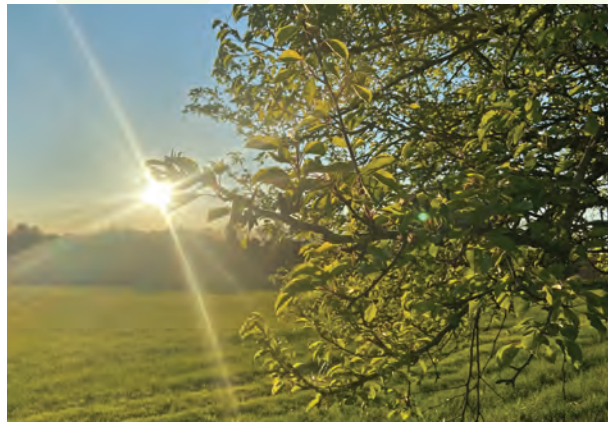
Ms. Danielle L. Brewster
Mr. Gerry L. Brewster
Mr. Walter W. Brewster*
Mrs. Holly Bricken
Mr. David Brooks
Mr. & Mrs. Jerald E. Brown
Gemmell M. Bruner
Ms. Constance R. Caplan
Mr. Jonathan Chapman
The Charles T. Bauer Foundation
Mr. John Ciesielski
Miss Gail Clark
Mrs. William D. Class, Jr.
Mr. William Class
Ms. Caroline H. Claytor
Mrs. Evelyn S. Cochran
Mr. & Mrs. Daniel W. Colhoun
Mr. Howard P. Colhoun

Mr. & Mrs. Mark M. Collins, Jr.
Continental Realty Corporation
Mr. & Mrs. Joseph Cowan
Mr. Charles C. Coyne
Mr. & Mrs. Irvin Crawford
Dr. Barry Daly
Mr. & Mrs. Jim Davis
Mr. & Mrs. Samuel Dell
Mr. & Mrs. Daniel Drachman
Terry Dunkin
Ms. Kathie Emge
Gail Ensor
Ms. Carol Fenwick
Mr. Charles C. Fenwick, Jr.
Mrs. Elizabeth W. Fenwick
Mr. H. Bruce Fenwick
Mr. & Mrs. Jack Fisher
Dr. & Mrs. John R. S. Fisher
Mr. Brian Flowers & Ms. Eliza Gould
Mr. & Mrs. Harry Ford III
Mr. & Mrs. Allen Forney
Mr. & Mrs. Franklin W. Foster
Mr. Victor Frenkil, Jr.
Mr. & Mrs. Michael Fulton
Mr. & Mrs. Timothy Gardner
Mr. & Mrs. Jean M. Germain
Mrs. Iva Gillet*
Mr. & Mrs. Sherlock S. Gillet, Jr.
Mr. & Mrs. Christopher Goelet
Mr. & Mrs. Mitchell T. Goetze
Green Spring Valley Hounds
Mr. & Mrs. Benjamin H. Griswold IV
Mr. & Mrs. Jack S. Griswold
Mr. & Mrs. Edward A. Halle, Jr.
Mr. & Mrs. Douglas W. Hamilton, Jr.
Mr. & Mrs. Michael D. Hankin
Mr. Torrence Harder
Mr. & Mrs. Michael Hardie
Mrs. William T. Harper, Jr.
Mr. Charles C. Harwood, Jr.
Mr. & Mrs. Donald R. Heacock
Mr. & Mrs. Donald B. Hebb, Jr.
Ms. Priscilla S. Hoblitzell
Mrs. Moira Hoen
Dr. & Mrs. Peter J. Horneffer
Ms. Lucy A.C. Howard
Ms. Mary Greenwood Howard



Ms. Anne Huber
Mr. & Mrs. George S. Hundt, Jr.
Mr. & Mrs. L.R. Huppman
Mrs. Harriet Iglehart*
Mr. & Mrs. Stuart S. Janney III
JBGB LLC
Mr. & Mrs. Richard Jiranek
Mrs. Gill Johnston
Ms. Ann Jones
Ms. Karen Kandra
Mr. Tim Kelly
Mr. & Mrs. Robert Killebrew, Jr.
Kingfisher Farm
Mrs. Anne W. Kinsley
Mr. & Mrs. Stanard T. Klinefelter
Mr. Donald & Mrs. Elaine Krause
Mr. Mason H. Lampton
Ms. Candida G. Lancaster
Mr. & Mrs. Clark J. Lare Jr.
Mr. M. Ronald Lipman
Mr. & Mrs. Donald P. Litz
Live Give Run Foundation
Mr. & Mrs. Benjamin F. Lucas II
Mabell LLC
Mr. & Mrs. Clark F. Mackenzie
Mr. & Mrs. George P. Mahoney, Jr.
Mr. Stanislaw Maliszewski &
Ms. Julia A. Jitkoff

Katharine Maroney
Ms. Ann B. Martin
Mr. & Mrs. J.W.Y. Martin, Jr.
Mr. & Mrs. James S. Matheny
Mr. & Mrs. George D. Mathias
Mr. & Mrs. Michael J. McCarthy
Mr. James R. McDonald
Mr. & Mrs. Hugh D. McGuirk
Mr. H. Turney McKnight
Mr. Mark McMillan
Mr. John L. McShane*
Dr. & Mrs. Nicholas L. Meitтинis
Mr. & Mrs. Scott S. Menzies
Mr. George F. Merck
Mr. Charles P. Merrick III
Mr. Kurt Miller
Mr. & Mrs. Malcolm Morris
Mr. & Mrs. Thomas F. Mullan III
Mr. & Mrs. Steven Munger
Mr. & Mrs. George Murnaghan
Ms. Alicia S. Murphy
Mr. & Mrs. Gary Murray
Mr. & Mrs. Jay W. Naish
Mr. & Mrs. Irvin S. Naylor
Mr. & Mrs. Charles W. Newhall III
Mr. Charles E. Noell
Miss Achsah O'Donovan
Mr. & Mrs. R. Bentley Offut



Mr. & Mrs. Peter Orthwein
Mr. Richard W. Palmer
Mrs. Mary Charlotte Parr
Mr. & Mrs. I. Manning Parsons
Ms. Janet C. Partel
Mr. & Mrs. Brooks Paternotte
Mr. William Peck
Mr. & Mrs. Michael L. Petersen
Louise Pitcher
Walter Puddifer
Mr. Walter E. Reynolds
Mr. George S. Rich
Mr. & Mrs. Corbin Riemer
Mr. & Mrs. James S. Riepe
Mr. & Mrs. Timothy F. Roberts
RTF Associates
Mr. & Mrs. Paul M. Sandler
Mr. Thomas Schweizer, Jr.
Jodee Seiders
Mr. Truman T. Semans
Mr. & Mrs. Ronald Shapiro
Mrs. John K. Shaw III
Ms. Elizabeth H. Sheehan
Ms. Sharon Sheppard
Mr. & Mrs. Samuel Slater
Mr. & Mrs. Judson Smith Jr
Mr. Lee Snyder
Mr. J. R. Solter
Mr. Michael J. Sonnenfeld &

Mrs. Betty W. Symington
Miss Sarah Stein
Mr. Robert H. Stevenson II
Mr. William G. Stewart &
Reverend Caroline R. Stewart
Miss Jennifer Sullivan
Miss Christina Taler
Temple Gwathmey Steeplechase
Foundation
The Dillon Fund
Valleys Planning Council
Mr. & Mrs. Charles E. Vieth
Ms. Barbara Voss
W. P. Carey Foundation
Mr. George Wagman III
Dr. & Mrs. Patrick C. Walsh
Mr. John Warden &
Dr. Marjorie Warden
Mrs. Mary W. Watriss*
Mr. & Mrs. Robert F. Webbert
Mr. Michael Flanigan &
Ms. Gregory R. Weidman
Ms. Betty Shaw Weymouth
Ms. Amanda S. Wharton
Mr. Michael T. Wharton
Mr. & Mrs. Thomas C. Whedbee
Mr. Edward I. Wight
Mr. & Mrs. Randolph Williams
Mrs. Sheila J. Williams

Mr. & Mrs. David R. Wilmerding
Mr. & Mrs. Edward Winslow
Mr. & Mrs. Howard D. Wolfe, Jr.
Mr. & Mrs. Douglas Worrall
Mr. & Mrs. Vernon Wright
Mr. & Mrs. William W. Wylie Jr.
Mr. & Mrs. Jeffrey M. Yates
Mr. & Mrs. Thomas G. Young III

*Denotes deceased



NOTES FROM THE PRESIDENT

As we complete my third year, I take stock of accomplishments and more importantly, what comes next. Through the first year of Covid, we paid close attention to re arranging administrative details while creating near term goals. In 2022 we made great strides in several areas of promise. We did what we said we would! Now it is time we look forward, cultivate a young generation, involve the community, and as always – settle more conservation easements.

We are in a very good place to look forward. With strong board leadership and management for easements, shawan downs, resource stewardship (streams and forest), a stream based educational program, administration, and the Legacy Chase - we can aim high. Whether we save 80 percent of the Piney Run Rural Legacy Area by 2030 (we are at 60 percent now), target an average of 400 newly conserved acres a year, strive to protect our 360 existing easements through annual monitoring, or re-invigorate Shawan Downs and its equine events, we have the capacity and experience to make it happen.

We operate within our budget, we set aside critical funds for the future, and each of our endeavors is to date, self- supporting. I see, however, a few worrying trends which we hope to reverse by becoming a greater presence in the community and reaching out to new friends. Perhaps much of what we do is invisible and understandably many become complacent in their enjoyment of the surrounding beauty. It took foresight, dedication, fortitude and perseverance, along with generosity and goodwill to get this far. It will take much of the same to protect what we have while continuing to preserve what is at risk.

Thanks to all who make LPT possible. I enjoy so much working with each and every one of you.



Victoria C. Collins
President
Land Preservation Trust

STATEMENT OF ACTIVITIES

Revenues, Gains & Other Support	2021		
	Without Restrictions	With Restrictions	Total
Contributions*	\$93,530	\$1,964,105	\$2,057,635
Stream Restoration Income (State & County Grants)	—	\$418,820	\$418,820
Easement Income	\$84,344	—	\$84,344
Special Events	\$192,768	—	\$192,768
SBA Loan Forgiveness	\$35,670	—	\$35,670
Interest & Investment Income (net)	\$25,441	—	\$35,670
Misc	\$1,295	—	\$1,295
Rental Income	\$44,172	—	\$44,172
	<u>\$477,220</u>	<u>\$2,382,925</u>	<u>\$2,860,145</u>
Satisfaction of Purpose Restrictions	\$1,939,842	-2,358,662	—
Total Revenues, Gains, and Other Support	<u>\$2,417,062</u>	<u>\$24,263</u>	<u>\$2,860,145</u>
EXPENSES			
Program Services			
Easements and Restricted	\$2,468,961	—	\$2,468,961
Legacy Chase and Shawan Downs	\$232,213	—	\$232,213
Total Program Services	<u>\$2,701,174</u>	<u>\$</u>	<u>\$2,701,174</u>
Supporting Services			
Management & General	\$74,083	—	\$74,083
Fundraising, Jr. Hunt Cup and Shawan Downs	\$67,073	—	\$67,073
Total Supporting Services	<u>\$141,156</u>	<u>\$</u>	<u>\$141,156</u>
Total Expenses	<u>\$2,842,330</u>	<u>\$</u>	<u>\$2,842,330</u>
Change in Net Assets	<u>-\$425,268</u>	<u>\$24,263</u>	<u>\$17,815</u>

* Restricted funds from state rural legacy and DNR Restricted funds

** Includes \$55,000 in donated contributions to Legacy Chase





LPT LAND PRESERVATION TRUST

Mission Statement

The Land Preservation Trust (LPT) is a 501(c)(3) nonprofit which preserves open space for future generations throughout northwest Baltimore County. The LPT's commitment to preserving land and natural resources is demonstrated by:

- o **Conservation** Holding permanent conservation easements in trust.
- o **Stewardship** Ensuring the integrity of these easements, and cultivating connections with landowners.
- o **Education** Promoting through innovative methods the value of land preservation, especially its benefits in sustaining healthy resources and habitat.

LEADERSHIP

Board Members

Victoria C. Collins, President
Edward A. Halle, Jr., Vice-President,
and Secretary
Nancy M. Roberts, Vice-President
Charles E. Vieth, Treasurer
Alice Chalmers
Charles C. Fenwick, Jr.
Jack S. Griswold
Gail P. Riepe
Michael Sonnenfeld
Michael T. Wharton

Easement Committee

Michael Sonnenfeld, (Chair)
Alice Chalmers
Victoria C. Collins
Ned Halle
Gail Riepe
Nancy Roberts
Michael Sonnenfeld, (Chair)
Mike Wharton
Ned Worthington (non-board member)

*Photos are courtesy of Anne Litz,
Carol Fenwick, and Ann Jones,
among others.*

Shawan Downs Committee

Michael Wharton, (Chair)
Victoria C. Collins
Charlie Fenwick, Race Director
Bruce Fenwick (non-board member)
Shockey Gillet (non-board member)
Jay Griswold
Blake Sheehan (non-board member)
James Stierhoff (non-board member)
Charlie Vieth

Staff

Ann H. Jones, Easement Director
Danielle Brewster, Property Manager
Anne Litz, Social Media and Communications
Valerie Fox Becker, Office Manager

Legacy Chase at Shawan Downs, LLC

Mark Lund, Director of Operations

Committee

Blake Sheehan, Co-Chair
James Stierhoff, Co-Chair
Justin Batoff
Connor Hankin
Anne Litz
Posey Obrecht
Devon Smith
Jackie Smith
Brooke Voss
Ned Worthington



LPT LAND PRESERVATION TRUST

13501 Falls Road
Cockeysville, MD 21030

CONNECT WITH LPT

Follow Land Preservation Trust on Facebook.

 facebook.com/LandPreservationTrust

Check out our webpage.

thelandpreservationtrust.org

Production of this report was made possible in part through an Aileen Hughes award from the Maryland Environmental Trust.

“We have the world to live in on the condition that we will take good care of it. And to take good care of it, we have to know it. And to know it and to be willing to take care of it, we have to love it.” —Wendell Berry

